

Directions: Go to the Website <http://3dtoad.com/> and click on “Human Skeleton” then click on “Color Study Set”.



## Pelvic Girdle

Ossa Coxae (Innominate Bones entire structure)

### A. Ilium

1. Iliac Crest (*Red*)
2. Acetabulum (*Green*)

### B. Pubis

3. Pubic Symphysis (*Yellow*)

### C. Ischium

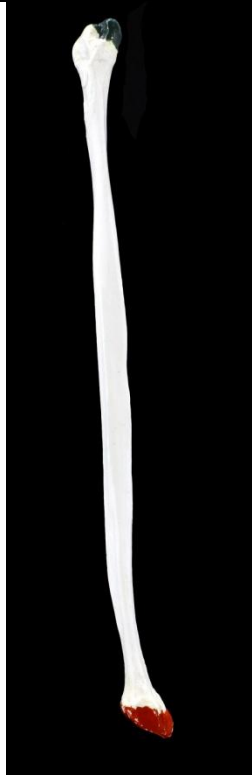
4. Ischeal Spine (Obturator Foramen - large hole) (*Light Blue*)
5. Ischeal Tuberosity (*Pink*)



## Tibia

1. Medial Condyle of Tibia (*Light Blue*)
2. Intercondylar Eminence (*Yellow*)
3. Tibial Tuberosity (*Pink*)
4. Medial Malleolus of Tibia (*Burgandy*)

Warning: These keys are not all inclusive. There are additional structures you are expected to learn for the bone exam. See the lists on pages 89, 111 and 112 of your lab manual.



## **Fibula**

1. Head of Fibula (*Red*)
2. Lateral Malleolus of Fibula (*Blue*)



## **Femur**

1. Head of Femur (*Gold*)
2. Neck of Femur (*Pink*)
3. Greater Trochanter of Femur (*Black*)
4. Lesser Trochanter of Femur (*Blue*)
5. Medial condyle of Femur (*Burgandy*)
6. Intercondylar Fossa of Femur (*Light Blue*)

Warning: These keys are not all inclusive. There are additional structures you are expected to learn for the bone exam. See the lists on pages 89, 111 and 112 of your lab manual.



## Humerus

1. Head of Humerus (*Gold*)
2. Anatomical Neck of Humerus (*Pink*)
3. Greater Tubercle of Humerus (*Green*)
4. Lesser Tubercle of Humerus (*Burgandy*)
5. Surgical Neck of Humerus (*Orange*)
6. Capitulum of Humerus (*Light Blue*)
7. Trochlea of Humerus (*Yellow*)
8. Medial Epicondyle of Humerus (*Black*)
9. Olecranon Fossa of Humerus (*Silver*)
10. Coronoid Fossa of Humerus (*Dark Blue*)



## Ulna

1. Head of Ulna (*Gold*)
2. Olecranon (Process) of Ulna (*Pink*)
3. Trochlear (semi-lunar) Notch of Ulna (*Black*)
4. Coronoid Process of Ulna (*Light Blue*)
5. Styloid Process of Ulna (*Red*)

Warning: These keys are not all inclusive. There are additional structures you are expected to learn for the bone exam. See the lists on pages 89, 111 and 112 of your lab manual.



## Radius

1. Head of Radius (*Burgandy*)
2. Neck of Radius (*Teal*)
3. Radial Tuberosity (*Yellow*)
4. Styloid Process of Radius (*Pink*)



## Hand (left)

1. Carpals (*Yellow*)
2. Metacarpals (*Pink*)
3. Phalanges (*Green*)

Warning: These keys are not all inclusive. There are additional structures you are expected to learn for the bone exam. See the lists on pages 89, 111 and 112 of your lab manual.



## Foot (right)

### Tarsals

1. Calcaneus (*Silver*)
2. Talus (*Silver*)
3. Metatarsals (*Pink*)
4. Phalanges (*Green*)



## Clavicle

1. Sternoclavicular Joint (articulation) of Clavicle (*Green*)

Warning: These keys are not all inclusive. There are additional structures you are expected to learn for the bone exam. See the lists on pages 89, 111 and 112 of your lab manual.



## Scapula

1. Acromion Process of Scapula (*Burgandy*)
2. Corocoid Process of Scapula (*Red*)
3. Spine of Scapula (*Yellow*)
4. Glenoid Cavity (Fossa) of Scapula (*Pink*)



## Skull #1

1. **SPHENOID**
2. Sella Turcici of Sphenoid (*Red*)
3. Ptergoid Process of Sphenoid (*Green*)
4. **ETHNOID**
5. Perpendicular Plate of Ethnoid (*Blue*)
6. Crista Galli of Ethnoid (*White*)
7. Cribriform Plate of Ethnoid (*Pink*)
8. Middle Concha of Ethnoid (*Burgandy*)
9. **INFERIOR CONCHA**
10. **VOMER** (*Yellow*)
11. **LACRIMAL** (*Gold*)
12. **MALAR (ZYGOMA)** (*Light Green*)
13. **Zygomatic Arch** (*Brown*)
14. **NASAL** (*Light Blue*)
15. **MAXILLA**
16. **Infraorbital Foramen in Maxilla** (*Red*)

Warning: These keys are not all inclusive. There are additional structures you are expected to learn for the bone exam. See the lists on pages 89, 111 and 112 of your lab manual.



## Skull #2 (z-axis rotation)

### FRONTAL

1. Glabella of Frontal (*Orange*)
2. Supraorbital Foramen in Frontal

### PARIETAL

### OCCIPITAL

3. Occipital Condyle of Occipital Foramen Magnum in Occipital (large hole in occipital bone in rear of skull)

### TEMPORAL

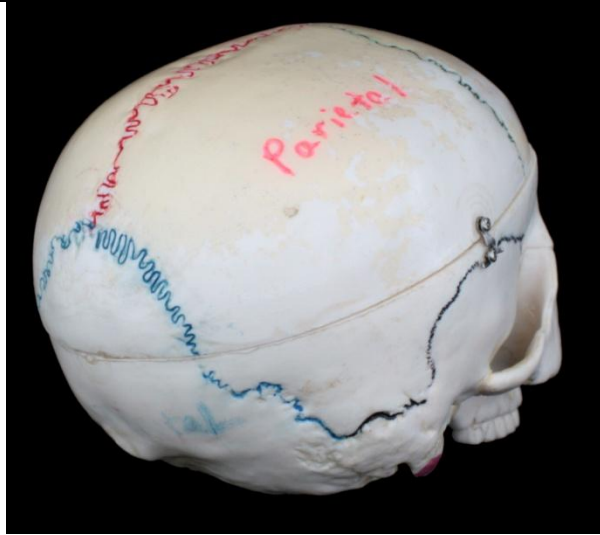
4. Mastoid Process of Temporal
5. External Auditory Meatus in Temporal
6. Styloid Process of Temporal



## Skull #2 (x-axis rotation)

Warning: These keys are not all inclusive. There are additional structures you are expected to learn for the bone exam. See the lists on pages 89, 111 and 112 of your lab manual.





## Sutures

1. Coronal Suture (*Green*)
2. Sagittal Suture (*Red*)
3. Lambdoidal Suture (*Blue*)
4. Squamous Suture (*Black*)



## Vertebra

1. Body Of Vertebra (*Red*)  
Vertebral (spinal) Foramen – hole
2. Spinous Process of Vertebra (*Dark Green*)
3. Transverse Process of Vertebra (*Orange*)  
  
Superior Notch of Vertebra (*Black*)  
  
Inferior Notch Of Vertebra (*Blue Lines*)

Warning: These keys are not all inclusive. There are additional structures you are expected to learn for the bone exam. See the lists on pages 89, 111 and 112 of your lab manual.



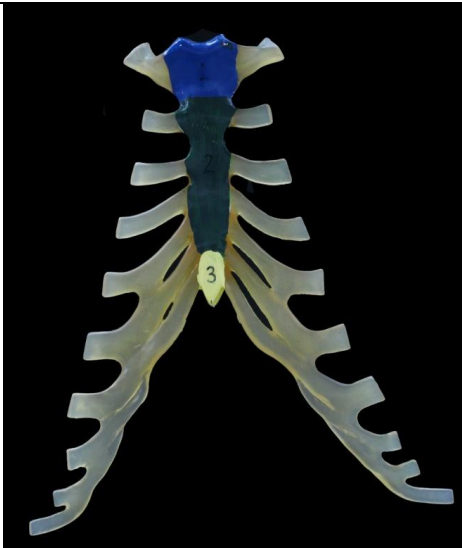


### **Vertebra (inverted)**

1. Body Of Vertebra (*Red*)  
Vertebral (spinal) Foramen – hole
2. Spinous Process of Vertebra (*Dark Green*)
3. Transverse Process of Vertebra (*Orange*)

Superior Notch of Vertebra (Black)

Inferior Notch Of Vertebra (*Blue Lines*)



### **Sternum**

1. Manubrium of Sternum (*Blue*)
2. Body of Sternum (*Green*)
3. Xiphoid Process of Sternum (*Yellow*)

Warning: These keys are not all inclusive. There are additional structures you are expected to learn for the bone exam. See the lists on pages 89, 111 and 112 of your lab manual.



## **Rib**

1. Head of Rib (Blue)
2. Neck of Rib (Red)
3. Tubercle of Rib (Orange)



## **Patella**

(kneecap)

Warning: These keys are not all inclusive. There are additional structures you are expected to learn for the bone exam. See the lists on pages 89, 111 and 112 of your lab manual.



## Mandible

1. Mental Foramen of Mandible (*Black*)
2. Condylar Process of Mandible (*Red*)
3. Coronoid Process of Mandible (*Yellow*)
4. Ramus of Mandible (*Gold*)
5. Body Of Mandible (*Pink*)



## Coccyx

Warning: These keys are not all inclusive. There are additional structures you are expected to learn for the bone exam. See the lists on pages 89, 111 and 112 of your lab manual.